

7.

HIWIN LAS Series (1)

LAS



Screw type	ACME
Weight*	1.04kg
Protection	IP54
Compatible controller	Compatible with all controllers [*Notice the type of connector: Audio/DIN 4pin]
Working temp.	+5°C~40°C

* Stroke length 200mm

* Option: (1) IP65

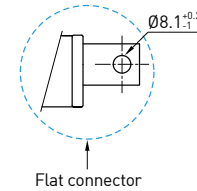
(2) Back fixture turned 90

(3) Rod end with flat connector (RL=S+110, S≤250/RL=S+160, S>250)

(4) 36VDC motor

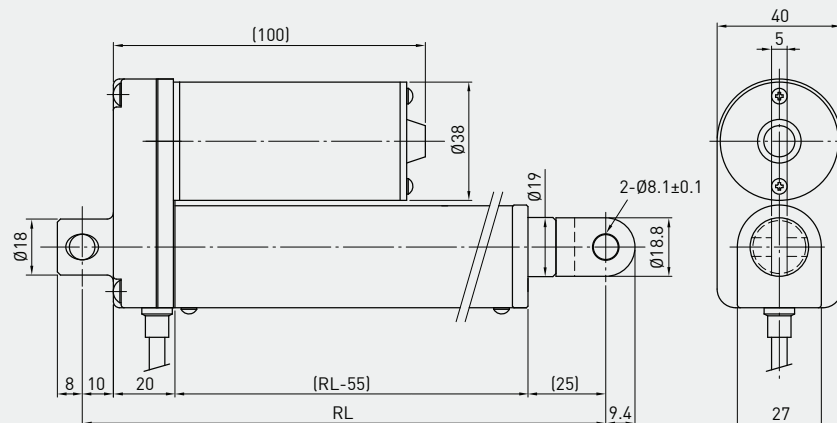
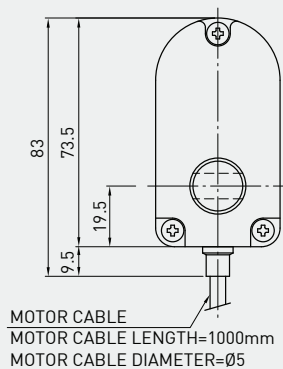
(5) External reed switches

(6) Plastic gear (Max. load: 800N)



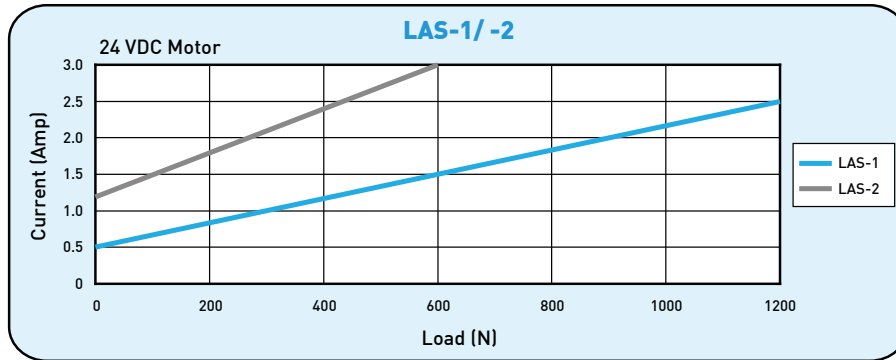
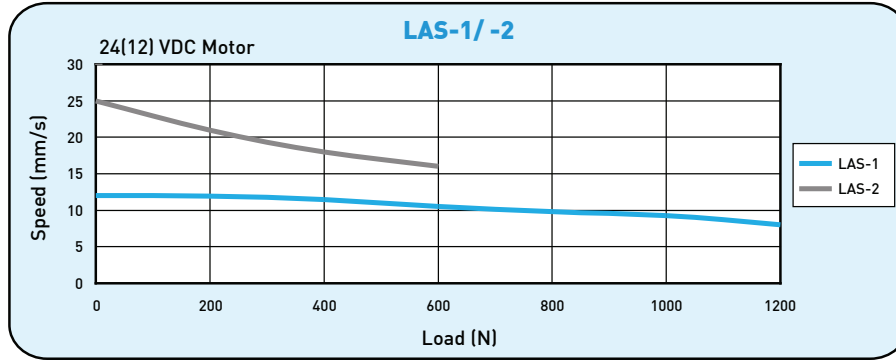
Flat connector

- RL=S+119
Stroke≤250
- RL=S+169
Stroke>250
- RL:Retracted length
• S:Stroke length

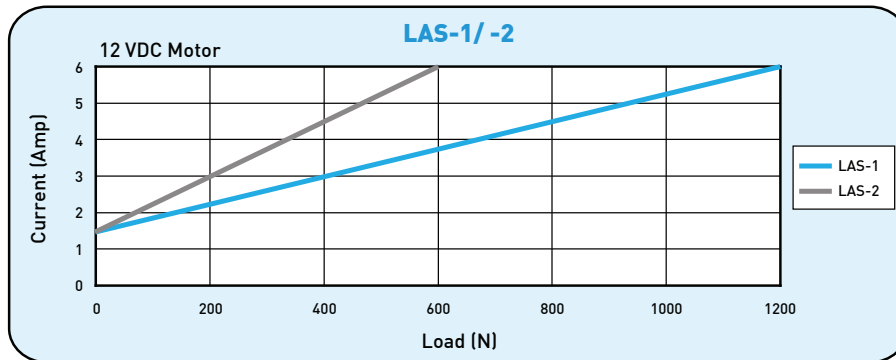


• LAS Specifications

Model	Thrust max. (N)	Pulling max. (N)	Holding max. (N)	Speed (mm/s) Load=Max./Load=0		Standard stroke (mm) : S					Duty cycle %	Current max. (A)	
				8	12	50	100	150	200	250		12VDC	24VDC
LAS-1	1200	1200	800	8	12	50	100	150	200	250	10	6	2.5
LAS-2	600	600	300	16	25	50	100	150	200	250	10	6	3



**Note: The test results are obtained by using the 24VDC power supply.



**Note: The test results are obtained by using the 12VDC power supply.

• Ordering Information

